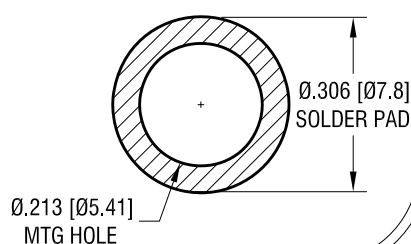
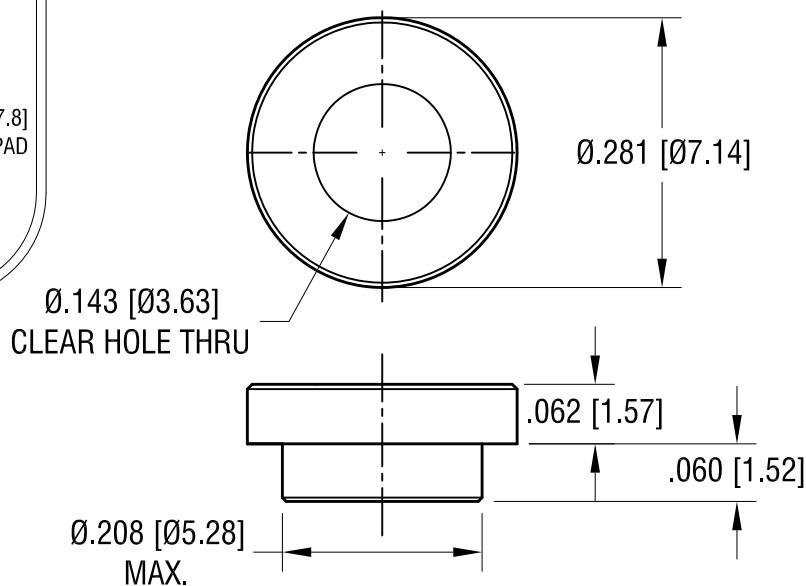


MOUNTING DETAIL



ACTUAL SIZE



NOTES:

1. SUPPLIED ON TAPE AND REEL ONLY.
TAPE AND REEL SPECIFICATIONS:
2. TAPE:
MAT'L - ALL CONDUCTIVE POLYSTYRENE CARRIER
ANSI/EIA-481 STANDARD
3. REEL:
13" [330.2] DIA. 1500 PIECES PER REEL
4. REELS TO BE SUPPLIED IN SEALED BAGS
WITH VCI PROTECTION.
5. KAPTON TAPE ADDED TO TOP SURFACE
OF STANDOFF.

KEYSTONE ELECTRONICS CORP.

www.keyelco.com • NEW HYDE PARK NY 11040 • Tel (516)328-7500

PART NAME

SM STANDOFF

MATERIAL

STEEL

FINISH

MATTE TIN PLATE

DRN BY

NT

DATE

1.03.17

APP'D

RH

SCALE

5X, 1X

TOLERANCES

INCH

[MM]

DECIMAL

± .005 [± 0.13]

ANGULAR

± 1°

UNLESS OTHERWISE SPECIFIED

CODE

C

DWG NO.

4896

7.29.24

SPECIFIED VCI PACKAGING.

A

DATE

DESCRIPTION

REV.